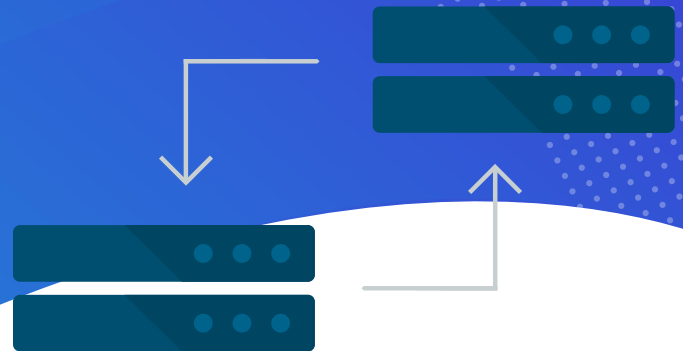


Datto SIRIS Private

Business Continuity and Disaster Recovery



SIRIS Private uses two or more SIRIS appliances to create an end-to-end BCDR solution that does not utilize the Datto Cloud. It is a great deployment option for industries like healthcare, financial services, and the public sector, as well as for organizations that are restricted from using the Datto cloud for replication or recovery. It can also be positioned for enterprise clients running workloads that require the added predictability and flexibility that only a dedicated solution can provide.

Utilizing a private cloud approach, SIRIS Private allows MSPs to offer clients an all-in-one solution that incorporates local backup and recovery with a secure secondary repository, that can be offsite for maximum redundancy and recoverability. All of this is delivered on dedicated SIRIS appliances and administered from the Datto cloud portal allowing MSPs to view, manage and recover client data from a single interface.

Creating this secure environment is as easy as deploying a SIRIS device locally and then connecting it to another SIRIS at that same site, a secondary client site, MSP data center or third party hosting provider. Doing so ensures that the data remains self-contained in the customer's network while still providing secondary replication. It can be configured in a number of available options, including:

- **Single and multi-tenant configurations** - replicate multiple clients back to the same secondary SIRIS or utilize dedicated appliances to isolate end client data
- **Site-to-site and hub-spoke replication strategies** - flexible to support a variety of different network topologies
- **Physical and virtual SIRIS options** - utilize physical SIRIS appliances or deploy on SIRIS Virtual or SIRIS Imaged, for added flexibility

In addition, SIRIS Private gives you all the benefits that come with our industry-leading SIRIS solution, including:

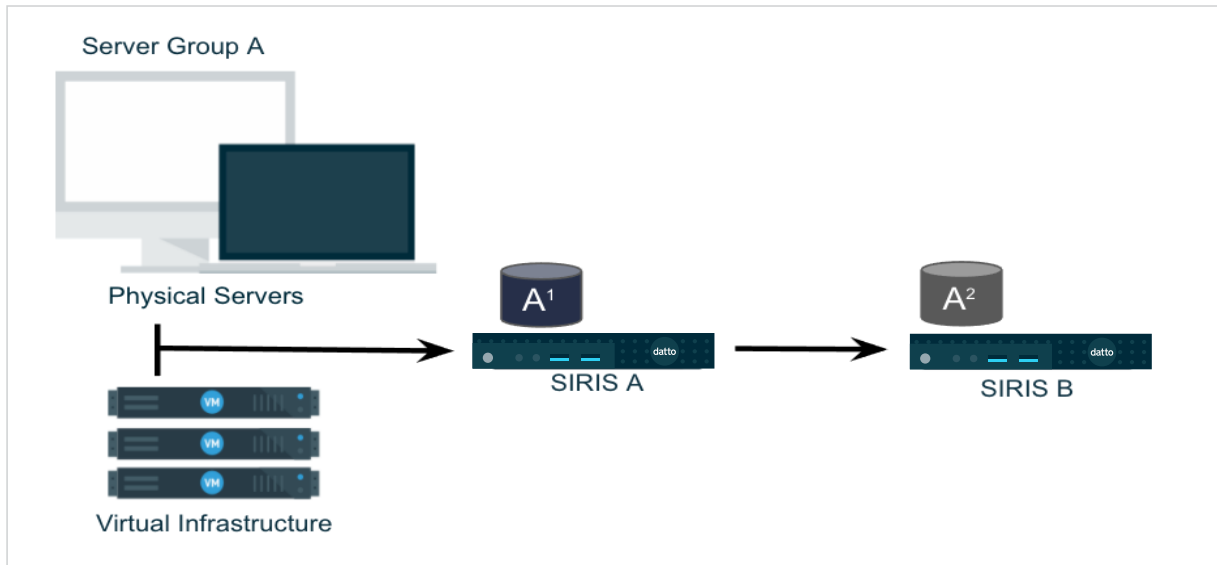
- Protection for physical servers and virtual machines running Windows Server or Linux.
- Inverse Chain Technology™ for reliable backup and fast, complete recovery
- Patented ransomware scanning and Screenshot Verification for recovery assurance
- Intuitive Recovery Launchpad for simple disaster recovery

Deployment options:

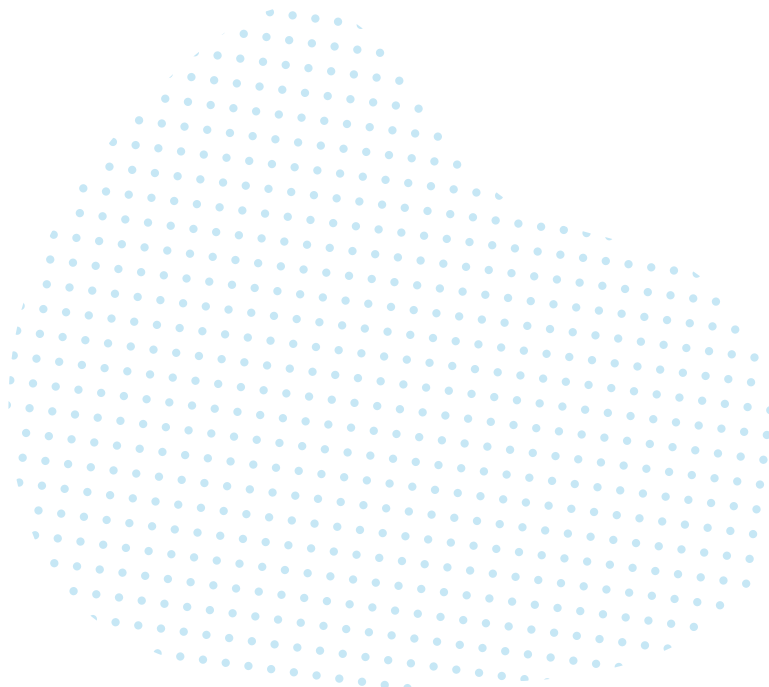
With the flexibility to deploy in a range of configurations based on the customer scenarios and locations, MSPs can deliver the same award-winning SIRIS BCDR experience while avoiding multi-tenant public cloud environments.

1:1 Configuration

This standard configuration utilizes an on-prem SIRIS device to capture local backups which are replicated to a second SIRIS device, either on-site or remotely.

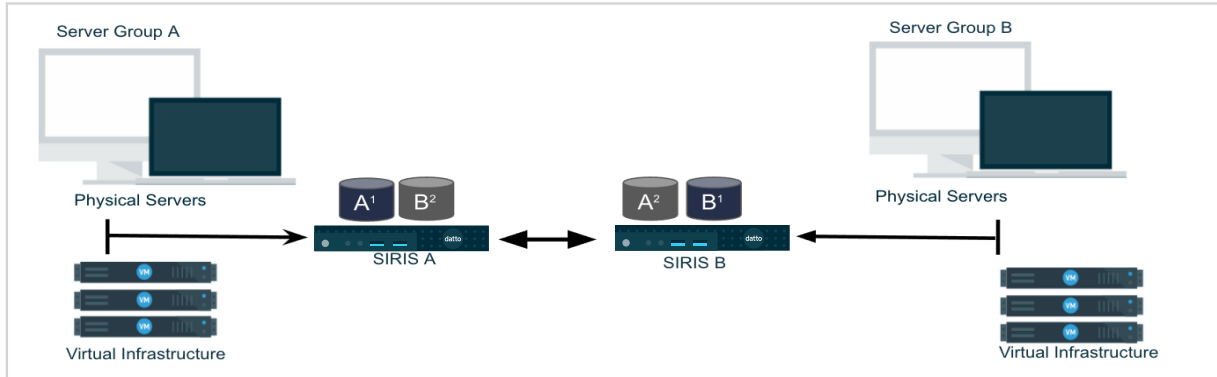


- Backup all physical and virtual servers to on-Site SIRIS A (A¹) using SIRIS Private service plan
- SIRIS A replicates to Single Target SIRIS B (A²)
- SIRIS A and B can be collocated or at different locations or data centers, connected via WAN
- Both SIRIS A and SIRIS B can be physical appliances, SIRIS Virtual, or SIRIS Imaged, in any combination
- Local restores and virtualizations supported on both SIRIS A and SIRIS B (Note: There is no Datto cloud virtualizations or hybrid virtualizations available with SIRIS Private)



Peer-to-Peer Configuration

For deployments where a client has two or more locations with workloads that need protecting, the peer-to-peer configuration allows you to configure both SIRIS devices to act as both a primary and secondary repository, and back up to each other. This can reduce complexity and total cost of ownership.

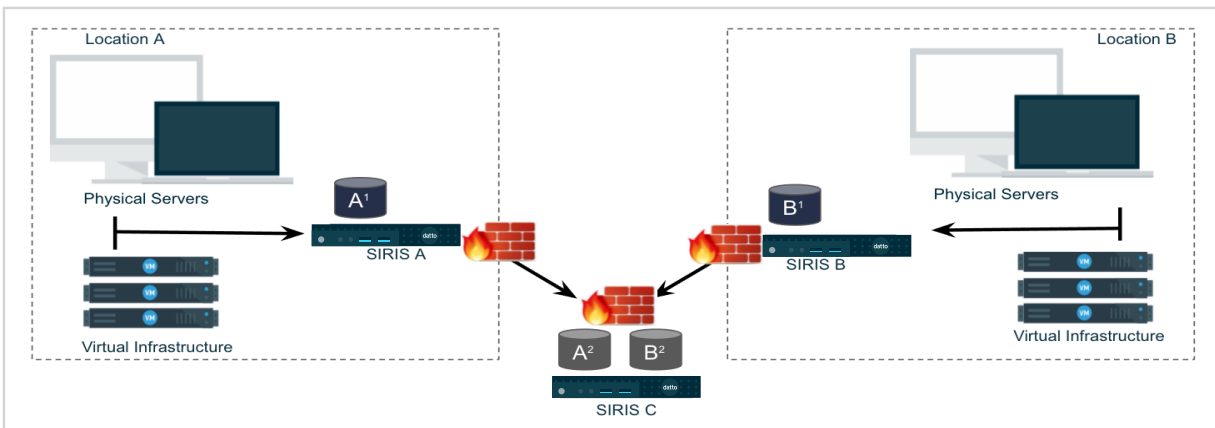


- SIRIS A and SIRIS B act as both source and replication devices in a peer-to-peer arrangement and are both on SIRIS Private plans.
- SIRIS A protects server group A (A¹) and replicates to SIRIS B (A²)
- SIRIS B protects server group B (B¹) and replicates to SIRIS A (B²)
- SIRIS devices can be collocated or at different sites, connected via WAN or VPN
- Additional locations and SIRIS devices can be deployed as needed to create a meshed configuration
- Local restores and virtualizations supported on SIRIS-A and SIRIS-B (Note: There is no Datto cloud virtualizations or hybrid virtualizations available with SIRIS Private)



Hub-Spoke Configuration

Hub-spoke adds even more flexibility by allowing you to replicate multiple client sites back to the same target SIRIS for larger environments. This is a great alternative to peer-to-peer when you have an MSP or 3rd party data center available to host the off-site SIRIS.



- Multiple Source SIRIS devices (A,B,...) replicate to single replication target SIRIS C at offsite location
- Can be same or different clients*
- SIRIS A protects server group A (A1) and replicates to SIRIS C (A2)
- SIRIS B protects server group B (B1) and replicates to SIRIS C (B2)
- SIRIS devices can be collocated or at different sites, connected via WAN or VPN
- Additional locations and SIRIS devices can be deployed as needed
- SIRIS devices can be physical appliances, SIRIS Virtual, or SIRIS Imaged, in any combination.
- Local virtualizations supported on all SIRIS devices (Note: There is no Datto cloud virtualizations or hybrid virtualizations available with SIRIS Private)

With SIRIS Private, MSPs have dedicated options for clients that cannot have their data replicated in public clouds or stored on multi-tenant infrastructure. It can also be used for client environments that require dedicated recovery hardware with predictable performance levels for critical workloads in the event that failover is required.

Datto Private SIRIS — Born for the MSP



Corporate Headquarters

Kaseya Miami
701 Brickell Avenue
Suite 400
Miami, FL 33131
datto.com

Global Offices

USA: 888.294.6312
Canada: 877.811.0577
EMEA: +44 (0) 118 402 9606
Australia: +61 (02) 9696 8190
Singapore: +65-31586291

©2023 Datto, Inc. All rights reserved.
Updated January 2023