

Datto Networking

Get Connected, Stay Connected
and Stay Secure

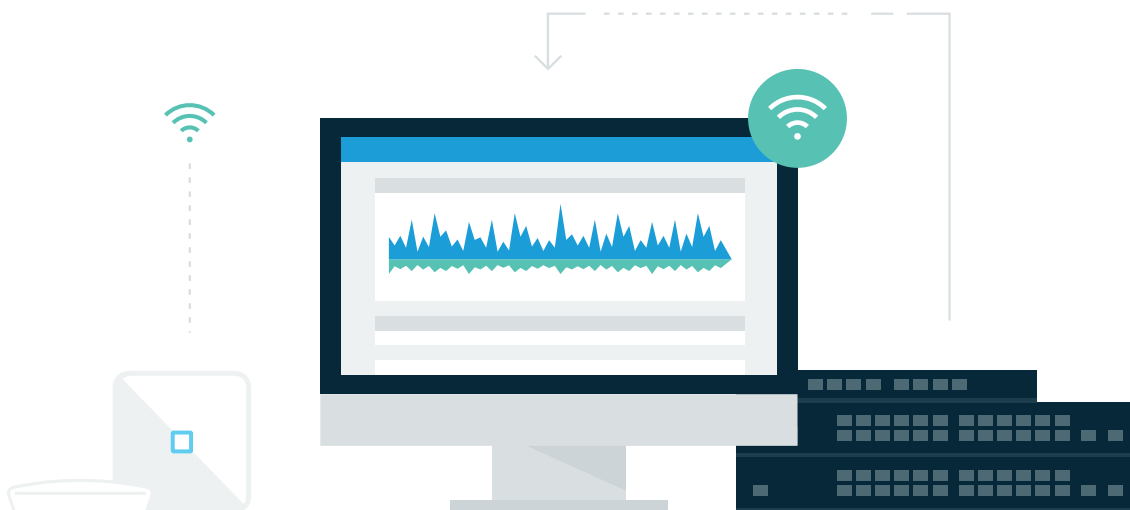


datto
A Kaseya COMPANY

Stay ahead of the competition with Datto Networking

In today's global economy, small to medium sized businesses (SMBs) are faced with communication, logistics and system challenges. With technology consistently changing and supply chains stretched, many IT teams find they are ill-equipped to keep up. As many businesses know when the network is up, everything is fine. However, when there are connectivity problems business suffers.

Without network and internet access, productivity halts and revenue is lost. Frequently, SMBs lack the requisite IT skills to deploy a network themselves, so they must hire outside help. Typically, this means an IT provider installs the network equipment as a project, and then they're done—until something goes wrong and they lose connectivity.



Powerful Hardware

Datto Networking delivers advanced hardware for today's complex networking environments, and includes options that scale as business needs change.

Performance

Datto Networking products deliver the advanced performance needed for any small to medium sized business. Datto Edge Routers perform with throughput speeds of up to 1.7 Gbps on the DNA. Datto Switches come in 8, 24 or 48 port options with PoE+ (802.3af/at) included on all ports (PoE budgets range from 55W to 740W). Datto Wi-Fi access points are fully mesh enabled and deliver powerful indoor/outdoor 802.11ac Wave 2 performance. Datto Networking solutions are built for reliability, affordability and manageability.

Optimized for today's networks

Datto Networking was purpose-built to deliver hardware capabilities and software features that streamline how your business delivers networking. Making it simple, secure, and more efficient, enabling your IT team to deliver an optimized network according to your specific business needs. That's what Datto networking is all about, seamlessly fitting into your business model so you can focus completely on solving your business problems.

Network continuity

Network continuity from Datto Networking delivers seamless, uninterrupted, always connected network operation with fully integrated 4G LTE failover and failback, always available cloud management, seamless Wi-Fi roaming, self-healing capabilities, hardened security and built-in safeguards designed to ensure maximum uptime.

In business, network connectivity can determine who wins and who loses. It can be the difference between servicing customers or frustrating them to no end. Businesses can't afford to be offline. Datto Networking's always connected, high performance networking products provide businesses with peace of mind, and the confidence that the network will be there when they need it.

Managed Networking

Most SMBs are totally reliant on their network to conduct business operations. Without network and internet access, productivity grinds to a halt and revenue is lost. So if the network is critical to your business, why would you accept the risk of network downtime?

That's where Datto Networking comes in. The entire product line is purpose-built for IT managed service providers to deliver networking to small to medium sized businesses. Our solutions are designed to keep your business up and running even if your ISP has an outage.

SMB performance

However, managed networking isn't only about avoiding downtime. You don't want a network that "just works." That's setting the bar too low—SMBs need high performance network and Wi-Fi solutions. They need Datto Networking.

With Datto Networking, managed services providers can design a network that ensures the best possible performance for all of your employees. For example, upon installation, our access points work together to form a self-organizing, self-healing, encrypted mesh network with Wi-Fi roaming automatically enabled. This built-in feature combined with the knowledge and expertise of a Datto Networking partner ensures your employees will have seamless coverage across the entire workplace.

It's gotta be secure

You've no doubt heard by now that cybercrime is on the rise. It's gotten to the point that criminals don't even need technical acumen to conduct attacks—ransomware as a service has emerged, allowing just about anyone to extort money from victims. You may have also heard of other recently exposed security exploits that, in theory, could be used by hackers to access sensitive business data via your Wi-Fi network. With Datto Networking's secure product offerings, managed service providers can ensure your network is secure, protecting your business against these types of threats and more.

The stateful firewall and intrusion detection and prevention built into the Datto Networking edge routers will defeat unwanted cyber attacks. Incorporating advanced security features such as stateful packet inspection, layer 7 DPI, port forwarding, DMZ host, enhanced web content filtering and VLAN segregation, the edge routers deliver you peace of mind.

Future proof

Out of the box, Datto Networking delivers multi-WAN support, managed in the cloud, facilitating network growth when needed. Every port on the 8, 24 or 48 port Datto Networking Switches comes equipped with built-in PoE+ (802.3af/at), increasing expansion opportunities, even when power options are not readily available. And Datto Networking Edge Routers deliver fully integrated 4G LTE failover and failback for always connected internet so that your business can keep running even when you lose your primary ISP connection. We build our hardware to perform. And, we build our hardware to last.

With Datto Networking you won't need to swap out your hardware just to implement new features. You see, we're in this for the long haul. That's why we continually develop and deliver new features through firmware updates. That's why we have more than 200,000 networks deployed and managed in the cloud and more than 40 million connected devices every month. That's why Datto Networking is a product line designed to deliver high performance networking that will grow and evolve with you and your future business needs.

Reduced network downtime

Because Datto Networking was purpose-built for delivery by a managed services provider, all management and monitoring functions were designed for the MSP to quickly and efficiently troubleshoot any issues. In fact, your MSP can often see things that are causing your network problems, many times before you even know a problem exists. That translates into less downtime and better network performance.

Mesh technology

As soon as you plug them in, Datto Networking Wi-Fi access points self-organize into a self-healing, encrypted mesh network with seamless roaming Wi-Fi automatically enabled. Since the beginning, we've recognized what mesh can mean for improved Wi-Fi performance. For example, mesh enables Wi-Fi expansion into physical locations where cabling options are limited. Or, mesh enables Wi-Fi continuity, the ability for an access point to automatically communicate with other APs on the network (self-healing) even when the ethernet cable is cut or damaged. The end result is smarter, simpler mesh-enabled Wi-Fi resulting in better Wi-Fi performance.

A Legacy of Networking Expertise

For over ten years, the products comprising Datto Networking have been deployed worldwide. With over 200,000 active networks and over 40 million connected devices every month, Datto Networking brings a long-standing legacy of networking expertise.

Managing a network requires a proactive approach to monitoring your business. Deploying a network requires experience and knowledge to ensure you get the networking products that best suit your business' requirements. The Datto Networking suite allows IT teams to do more with less and with capable hardware that includes software and workflow integrations that aim to increase efficiency and simplify monitoring/management.

Cloud management for today's IT environments

Cloud management simplifies things and enables remote deployments and troubleshooting. Cloud-managed access points enable technicians' flexibility to remotely configure or restart a device remotely, rather than on-site saving time and money.

Additionally, this means that networks are easier to maintain, monitor, update and reconfigure at any time and keep secure across multiple locations.



Datto Networking Products

Built for performance

Datto Networking's intuitive products deliver advanced networking features for today's complex networking environments, and include options that scale as business needs change.



Datto Networking Wi-Fi

Not too long ago, Wi-Fi for business was rare. Then came the IEEE standard, and things changed. Today, Wi-Fi is everywhere, and small to medium sized businesses are right in the middle of it.

Managed Wi-Fi

Datto Managed Wi-Fi ensures you get the best and most broad wireless coverage configured to the latest IEEE Wi-Fi standards.

Universal mounting options

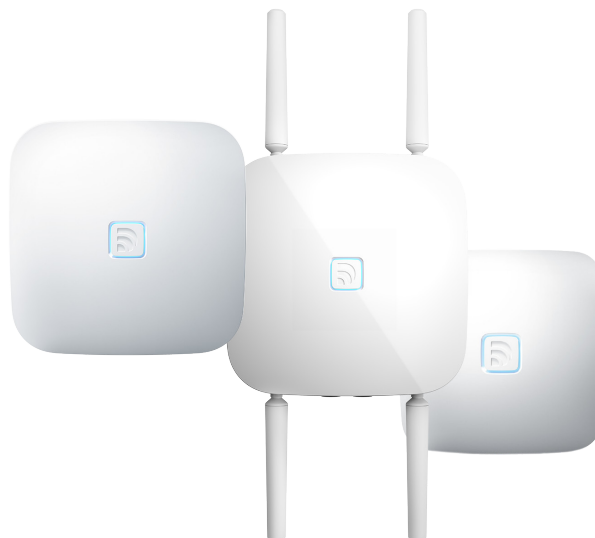
Datto Networking access points are designed to be deployed in virtually any environment. With an operating temperature range starting at -20°C up to 50°C, harsh cold or heat are not a problem. And with an IP55 rating, the APs can be installed indoors or outdoors, and can even handle dust and rain.

Powerful Wi-Fi

Wi-Fi networking should always be available, accessible throughout your office, and seamless to every user. That's why Datto Networking Wi-Fi access points deliver powerful, seamless roaming for always connected Wi-Fi. With options ranging from 2x2x2 dual band Wi-Fi 6 to our 4x4x4 models with dedicated scanning radios, you will experience powerful Wi-Fi for your business needs.

Self-healing mesh

All Datto Networking access points are mesh enabled and get their power from PoE+ (802.3af/at). Access points work together to form a self-organizing, self-healing, encrypted mesh network with seamless Wi-Fi roaming automatically enabled. That means no more dead spots. It's Wi-Fi continuity, wherever it's needed.



AP440

AP840

AP840E

| Application | 802.11ax Indoor/Outdoor Cloud-Managed Wi-Fi Access Point | 802.11ax Indoor Cloud-Managed Wi-Fi Access Point | 802.11ax Indoor/Outdoor Cloud-Managed Wi-Fi Access Point |
|---|---|---|---|
| Bands | 2.4GHz + 5 GHz | | |
| Wireless Connectivity | 802.11a/b/g/n/ac/ax 2.4GHz: 2x2, 5GHz 2x2 MU-MIMO + OFDMA 2.4GHz: 20/40 MHz channels (802.11ax) 5GHz: 20/40/80 MHz channels (802.11ax) | 802.11a/b/g/n/ac/ax 2.4GHz: 4x4, 5GHz 4x4 MU-MIMO + OFDMA 2.4GHz: 20/40 MHz channels (802.11ax) 5GHz: 20/40/80 MHz channels (802.11ax) | |
| Supported Frequency Bands (Country-Specific Restrictions Apply) | 2.412-2.484 GHz 5.150-5.250 GHz(UNII-1) 5.735-5.825 GHz (UNII-3) | | |
| Speed (Rated) | 1.8 Gbps 2.4GHz - 573.5 Mbps, 5GHz - 1201 Mbps | 3.6 Gbps 2.4GHz - 1148Mbps, 5GHz - 2400Mbps | |
| Range (Approximate) | 100'-200' indoor (3-4 Walls) 300'-450' outdoor | 150'-300' indoor (3-4 Walls) | 150'- 300' indoor (3-4 walls), Dipole: 400'-600' outdoor Patch Antenna: 600'-800' outdoor |
| Max Users (Recommended) *Measured concurrently with 5mbps of TCP traffic | 150 per AP* | | 250+ per AP* |
| Cloud Management | Yes | | |
| Security | WPA/WPA2 Personal and Enterprise, WPA3 Personal and Enterprise | | |
| Dedicated Scanning Radio | Yes | | |
| Integrated BLE | No | Yes | |
| Other | Captive portal/splash pages, Facebook Wi-Fi, user management capabilities and much more. | | |
| Automatic Firmware Upgrades | Yes | | |
| Automatic Feature Upgrades | Yes | | |
| Zero Config Plug and Play | Yes | | |
| Self-Forming, Self-Healing Mesh | Yes | | |
| Seamless Roaming | Yes | | |

AP440

AP840

AP840E

| | | | |
|---------------------------------|--|---|--|
| External Antennas | No | Yes, Omnidirectional Included, Optional Directional Panel Antenna Sold Separately | |
| Ethernet/LAN | 2x Gigabit Ethernet | 1x 2.5 Gbps Multigigabit Ethernet 1 X Gigabit Ethernet | |
| PoE | 802.3at, 12V DC power | 802.3at, 48V DC power | 802.3at |
| Power Consumption (Peak) | 25.5 W | 28.5 W | 24.5 W |
| CPU | Qualcomm IPQ6010 | Qualcomm IPQ8072A | Qualcomm IPQ8072A |
| Memory | 1G DRAM DDR3 | | |
| LED Indicators | Nine-color status indication | | |
| Hardware Watchdog | Yes | | |
| Indoor/Outdoor Rating | UL+CE Marked for Outdoor/Indoor Use, IP54 | Indoor only | UL+CE Marked for Outdoor/Indoor Use, IP55 |
| Certifications | EN 62368-1, UL 62368-1, UL 60950-22, IEC 60950-1, IEC 60529, EN 55024, EN 55032, EN 55035, EN 62311, EN 50385, EN 300.328, EN 301.489-1 and EN 301.489-17, EN 301.893, AS/NZS 4268, AS/NZS CISPR 32, ICES-003, RSS-247, RSS-102, RSS-GEN, FCC Part 15 B, C, E, | EN 62368-1, UL 62368-1, EN 55024, EN 55032, EN 55035, EN 62311, EN 50385, EN 300.328, EN 301.489-1 and EN 301.489-17, EN 301.893, AS/NZS 4268, AS/NZS CISPR 32, ICES-003, RSS-247, RSS-102, RSS-GEN, FCC Part 15 B, C, E, | EN 62368-1, UL 62368-1, UL 60950-22, IEC 60950-1, IEC 60529, EN 55024, EN 55032, EN 55035, EN 62311, EN 50385, EN 300.328, EN 301.489-1 and EN 301.489-17, EN 301.893, AS/NZS 4268, AS/NZS CISPR 32, ICES-003, RSS-247, RSS-102, RSS-GEN, FCC Part 15 B, C, E, |
| Operating Temperature | -20° to 50° C (-4° to 122° F) | 0° to 40° C (32° to 104° F) | -20° to 50° C (-4° to 122° F) |
| Humidity | 5% to 93% non-condensing internal | 5% to 93% non-condensing | 5% to 93% non-condensing internal |
| Size | 185.6mm x 185.6mm x 40 mm (7.31" x 7.31" x 1.58") | 220mm x 220mm x 47.75mm (8.66" x 8.66" x 1.88") | Without Dipole Antennas: 250mm x 250mm x 53mm (9.84" x 9.84" x 2.09") With Dipole Antennas: 566mm x 250mm x 53mm (22.3" x 9.84" x 2.09") |
| Weight | 0.544 Kg (1.19 lb) | 0.93Kg (2.03lb) | 1.6 Kg (3.55lb) |

Datto Networking Switches

Datto Networking Switches seamlessly connect devices and users on the network, enabling users to work smarter and faster. The switches include robust Layer 2 management features including line rate switching, link aggregation, port mirroring/trunking, STP, IGMP snooping, VLAN, port security, storm control, port isolation, attack prevention, ACL, SNMP and more.

Datto switches deliver plug-and-play integration with Datto Networking access points, simplifying how you deploy and manage your network. With simpler networking designed for your team, you will experience better performance, reduced downtime and the right networking capabilities for your specific business needs.

Proactive monitoring

Datto Networking Switches are remotely managed by you. This means your network administrator can better monitor and proactively manage your network and all the connected devices, including remotely enable, disable or power cycle ports. Your team will have visibility into any IP device's power consumption on a per port basis or across all connected devices. This increased visibility enables you to proactively head off any potential problems, including external security threats. And that delivers peace of mind for you and your business.

Designed to fit

With PoE being standard on every SKU, Datto Networking Switches are designed to accommodate virtually any sized network configuration a small to medium sized business might need. And expanding a network has never been easier. Your network administrator can quickly add new switches when your growth demands it. And upon installation, your switches work seamlessly with Datto access points to create a seamless roaming Wi-Fi network.





DSW100-8P-2G



DSW100-24P-4X



DSW100-48P-4X



DSW250-8P-2X

| | Gigabit Ethernet | | | Multi-Gigabit Ethernet |
|--|--|---|---|---|
| Port Density and Power Output | | | | |
| Copper Ports | 8x GigE 2 SFP 110 | 24x GigE 4 SFP+ 250 | 48x GigE 4 SFP+ 410 | 8x2.5 GigE 2 SFP+ 240 |
| Optical Ports | | | | |
| PoE Budget (W) | | | | |
| Layer1 Features | | | | |
| PoE Management | Power on/off per port, power class configuration, power feeding with priority, user-defined power limit, IEEE 802.az Energy Efficient | | | |
| Layer2 Specifications | | | | |
| Maximum VLANs | 4096 | | | 4096 |
| Max Frame Size | Up to 10K bytes 8K 4.1M bits | Up to 12K bytes 16K 12M bits | Up to 9K bytes 32K 16M bits | Up to 10K bytes 16K 12M bits |
| Unicast Mac Address | | | | |
| Packet Buffer Memory | | | | |
| Layer 2 Features | 802.1Q VLANs, Port Trunking/802.3ad link aggregation, port mirroring, auto-detect uplink port, port isolation, IGMP snooping, rate limiting (Tx/Rx), low control, jumbo frames, LLDP (Up to 256 unique VLAN IDs can be configured) | | | |
| Spanning Tree Protocol | 802.1w Rapid Spanning Tree (RSTP), 802.1s Multiple Spanning Tree (MSTP) | | | |
| VoIP Provisioning | QoS, Voice VLAN + OUI list, LLDP-MED | | | |
| Layer3 Specifications | | | | |
| IPv4 Static Route and | Up to 63 entries | | | |
| DHCP | DHCP Relay, DHCP Snooping | | | |
| Access Control | MAC, IPv4 Based ACLs. Actions: Permit/Deny | | | |
| Quality of Service | 802.1p/CoS, DSCP | | | |
| Remote and Local Management and Monitoring | | | | |
| Cloud Management | Full support within Datto Network Manager, no on-site appliance required. | | | |
| SNMP Polling | v1/v2c, supporting MIBs RFC1213, RFC1493, RFC1757, RFC2674 | | | |
| Troubleshooting Tools | Cable Diagnostics, Ping, Traceroute | | | |
| Physical & Environment | | | | |
| Mounting | Desktop, wallmount 100-240 VAC, 50/60Hz 0~40°C -20~70°C | Desktop, wallmount, rackmount 100-240 VAC, 50/60Hz 0~40°C -20~70°C | Desktop, wallmount, 100-240 VAC, 50/60Hz 0~50°C -40~70°C | Desktop, wallmount, rackmount 100-240 VAC, 50/60Hz 0~50°C -40~70°C |
| AC Input | | | | |
| Operation Temperature | | | | |
| Storage Temperature | | | | |
| Humidity | Operation: 10%~90% RHStorage: 5%~95% RH | | | |
| Dimension (WxDxH) | 240x105x27 mm | 440x257x43 mm | 440x410x44mm | 330x230x44 mm |
| Certifications | FCC, CE (Class A) | FCC, CE, Canada, and C-Tick | FCC, CE, C-Tick | FCC, CE |

Datto Networking Secure Routers

What happens when you lose your connection to the internet? Your business grinds to a halt and your users or your client are upset. The longer the internet connection is down, the longer the business is halted and losing money and customers. Having LTE backup keeps the business humming along.

That's why we built the Datto Networking Secure Router, to solve one of the most important connectivity problems you face today: keeping your internet up and running even if your primary internet connection goes down, so you can get that job done. And we all know this happens a lot, especially if your business is relying on a local cable company for internet.

Fully integrated 4G LTE keeps your business going

With fully integrated 4G LTE combined with out of the box ready carrier service, Datto's Secure Routers II enable MSP and SMB IT Professionals to deliver always connected internet. That means that when your ISP is offline, your business isn't.

Datto Edge DNA Secure Router keeps your office online during an internet outage and allows you to manage and configure any Datto device on the network when the primary internet connection is down.

And we do this without requiring a contract with the wireless carrier. We simply keep you and your end users connected and productive.

High performance routing

Solving the always connected internet problem is big. But we're not satisfied with just that. That's why we built the Datto Networking DNA Secure Routers to deliver high performance routing capabilities including robust VPN features, port forwarding, VLAN segregation and the ability to categorize traffic by application, traffic shaping and more. And with the horsepower to enable throughput speeds of up to 1.7 Gbps on the DNA, Datto Networking DNA Secure Routers deliver the performance needed for nearly any small to medium sized business.

Born in the cloud

All Datto Networking products are fully managed in the cloud. Why is that important? So your MSP and SMB IT professional can easily and efficiently manage your network... remotely.

Think about it. If you had to come onsite every time you had a network problem, you would waste a lot of time just waiting. And when you are waiting, you aren't getting work done. Being born in the cloud means you can efficiently and proactively manage all of your network devices, heading off problems before you even know about them. That saves you time and ultimately money.

Integrated firewall and advanced threat protection

We've all heard the stories of ransomware or malware attacks. What is not commonly known is that these attacks are not just a big business problem. Ransomware or other malware attacks are agnostic as to whom they go after. Security at the network edge is absolutely critical, which is why you need a router with advanced security features.

Datto Networking Secure Routers integrate a stateful firewall with layer 7 deep packet inspection, NAT rule creation and DMZ host control.

In addition to the integrated firewall, Datto provides enhanced web content filtering, a vital security layer at the DNS level, which empowers your MSP or SMB IT professional to manage, protect and control user access to risky web-based content. Backed by Titan HQ, a service that crawls over 700 million URLs, 6 billion web pages in 200 languages, and reviews 5 trillion search queries in real time every single day, Datto's advanced security enables you to be confident that Datto will effectively protect your network against unwanted threats and attacks.



Datto Networking Appliance

Features

Alerts & Notifications

RMM/PSA Integration

IPv4

Layer 7 Traffic Management

Hosted VoIP Support

Supports up to 8 VLANs

APT Blocker

Network Discovery

PPPoE

Port Aggregation

Traffic Shaping

Static routing for internal routes—excludes WAN routes and policy-based routes

Firewall

Stateful Packet Inspection

Port Forwarding

1:1 NAT

1:Many NAT

DMZ Host

Layer 7 DPI

Enhanced Web Content Filtering

DNS Security Layer

Malware & Ransomware Protection

Real-time Continuous Updates

Web Content Control

Security

Intrusion Detection System

Intrusion Prevention System

Port Scanning

Signature-based Rule Files

Web Filtering

Whitelisting

Ad Blocker

Failover

Bundled 4G LTE Service

No Carrier Contract Required

WAN Failover

Hardware

8 Core 2.4GHz Intel Processor

8 GB DDR3 RAM

32 GB Industrial Compact Flash Hard Drive

6 Built-in 10/100/1000 Ethernet Ports
- 2 Dedicated WAN Ports, 4 Configurable VLAN Ports

3x3 MIMO 802.11 AC Wi-Fi 2.4/5GHz

Fully Integrated Multi-band Cat4 Radio (LTE)

Environmental

0° to 40°C (32° to 104°F)
Operating Temperature

Dimensions: 231mm x 197mm x 44mm
(9.09" x 7.76" x 1.73")

VPN Support

SSL (Open VPN)

IKEv2

IPSec

Hub & Spoke (multi-router)

Performance

250,000 Concurrent Connections

1.7 Gbps Firewall Throughput
(1,518 Packet Size)

661 Mbps IPS Throughput (372 Packet Size)

569 Mbps DPI Throughput (372 Packet Size)

730 Mbps IMIX Throughput (372 Packet Size)*

*IMIX (or internet Mix) is a metric stimulating internet traffic flowing through various networking equipment, and is intended to represent how internet traffic would flow in real world conditions.

Management & Warranty

Cloud Management: dna.datto.com

3 Year Advanced Replacement Warranty

Sold & supported in the following locations

USA, Puerto Rico, US Virgin Islands and Canada.





Datto Secure Edge

Securely work from home, the road, or anywhere else business takes you. Datto Secure Edge gives road warriors, executives on the go, and today's ever-growing hybrid and remote workers next-generation security, coupled with advanced networking capabilities needed for today's cloud and SaaS work environments. Datto Secure Edge is a cloud-managed Secure Access Service Edge (SASE) solution that helps organizations achieve a Zero Trust security posture.

Fast and secure remote access

With cyber criminals targeting remote and hybrid workers, it is imperative to provide advanced threat protection to these highly vulnerable targets. With Datto Secure Edge, remote workers are protected wherever they are located – at home, a coffee shop, or anywhere else. With Datto Secure Edge, remote workers can safely access corporate and cloud resources, as if they were behind the protection of their corporate firewall.



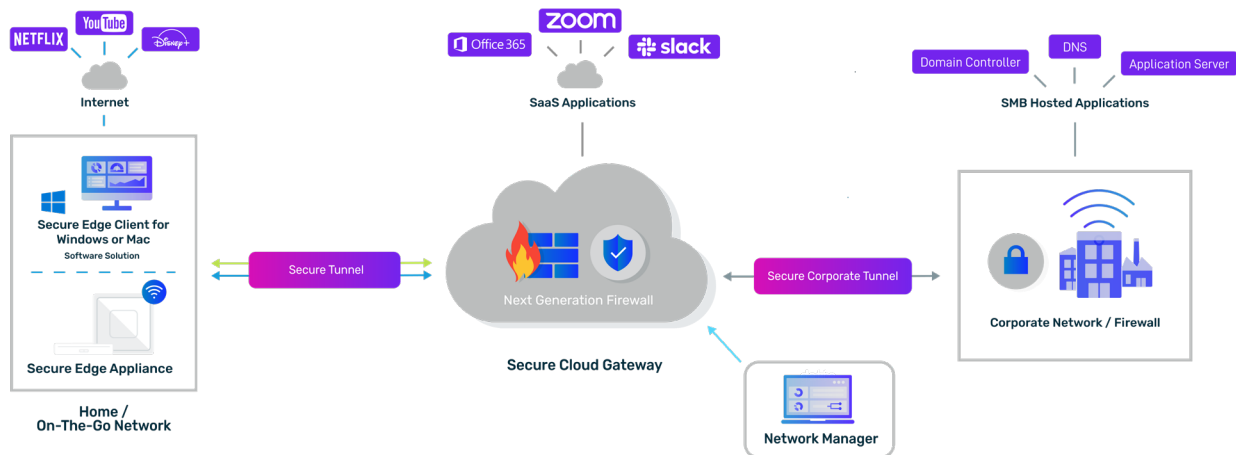
Advanced cybersecurity protection

Datto Secure Edge provides cutting edge, cloud-based next-generation firewall (NGFW) protection, including application control, secure web gateway (SWG), cloud access security capabilities, and more – all designed to help organizations achieve a Zero Trust security posture.

Optimized for the cloud

For remote workers who need to access SaaS applications, Datto Secure Edge provides a superior way to optimize network traffic so that employees get faster and safer access to corporate web resources, such as Salesforce or Microsoft Teams. Integrated WAN edge services include SD-WAN, WAN optimization, QoS, SaaS acceleration, content delivery and more.

Datto Secure Edge also operates with a static, dedicated IP address so that businesses can easily enforce their policies and rest assured knowing their remote workers' traffic is moving through a dedicated cloud gateway.



| | Datto Secure Edge Service |
|--|---------------------------|
| Soft-Client Operating Systems | Windows, MacOS |
| Cloud VPN Aggregation | Yes |
| Easy Cloud Management and Auto Provisioning | Yes |
| Web Content Filtering (DNS) | Yes |
| Application Filtering (DPI) | Yes |
| Prioritize Delay Sensitive Applications | Yes |
| IPSec To Third Party Firewalls | Yes |
| Easily Integrates with Existing Identity, SSOs and MFAs authentication solutions | Yes |

| | DSE421 Appliance |
|---|------------------|
| Wi-Fi Technology | 802.11ac |
| Advertises Work Wi-Fi Network | Yes |
| Prioritize Delay Sensitive Applications | Yes |



Corporate Headquarters

Kaseya Miami
701 Brickell Avenue
Suite 400
Miami, FL 33131
partners@datto.com
www.datto.com
888.294.6312

Global Offices

| | |
|------------|----------------------|
| USA: | 888.294.6312 |
| Canada: | 877.811.0577 |
| EMEA: | +44 (0) 118 402 9606 |
| Australia: | +61 (02) 9696 8190 |
| Singapore: | +65-31586291 |

©2023 Datto, Inc. All rights reserved.
Updated December 2023