

eBook

datto
A Kaseya COMPANY

Save Time, Reduce IT Stress and Be More Secure With Datto

Become an IT team that tackles endpoint complexity with confidence and makes every workday count.



What is Datto's endpoint management solution - Datto RMM?

A platform to monitor endpoints, manage users and keep your network secure.

Managing IT is stressful, especially when you're juggling multiple tools that don't quite meet your needs. As issues pile up, you and your technicians spend more time putting out fires than making real progress. The result? A draining, repetitive cycle that leaves everyone frustrated.

We understand the challenge and Datto RMM is purpose-built to solve them. Datto RMM is a unified endpoint monitoring and management platform that lets you handle everything from one interface. It combines endpoint management, user management and security in one convenient, cloud-based solution.

With Datto RMM, you'll have everything you need in one place, supported by seamless automation and easy integrations that boost your productivity. No more jumping between tabs or juggling multiple tools. Your work becomes simpler, stress levels drop and you'll actually look forward to Monday mornings.

Boost productivity and reduce overtime with Datto RMM

Reduce routine IT workloads and put an end to long hours and interrupted vacations.

IT technicians constantly have their hands full. According to the [2024 Future of IT Survey](#), nearly 69% of IT professionals regularly work weekends or holidays, 42% put in consecutive 50-hour weeks and 39% have had vacations interrupted by emergencies. Heavy workloads like these quickly hurt productivity and morale.

By automating repetitive tasks, like patching systems and deploying updates, Datto RMM helps IT teams spend less time on mundane tasks. That means they can dedicate more energy to impactful projects and strategic initiatives, increasing both productivity and job satisfaction.

Here's what your IT team gets when you switch to Datto RMM:

- **Reduced manual tasks:** Automation cuts down on repetitive work, freeing technicians for important projects.
- **Easy endpoint monitoring:** Quickly identify and resolve issues from one clear, intuitive dashboard.
- **Simplified Microsoft 365 management:** Easily manage Microsoft 365 within Datto RMM, eliminating extra complexity.
- **Proactive security:** Built-in, automated endpoint security helps prevent threats before they turn into emergencies.



Save time and eliminate manual work with Datto RMM

Automate routine IT tasks and reclaim valuable hours in your team's day.

Manual IT tasks are often time-consuming and exhausting. Automating routine processes, such as patch management, significantly reduces the time and effort needed to maintain an updated and secure IT environment. For example, [TeleGlobal Consulting](#) used Datto RMM's automated patching capabilities to achieve 95% patching compliance. "One key reason we chose Datto RMM was that we saw the automation on things like patch management and software management, which seems to work better than the competition," said Stathis Bettas, Director of Operations for TeleGlobal Consulting.

In fact, the [2024 Future of IT Survey](#) found that 40% of organizations are actively investing in automation, with 29% ranking it as their top priority for boosting productivity.

Here's how Datto RMM's automation helps your team:

- **Less routine work:** Automation handles tasks like patch management, software updates and administrative chores, freeing your technicians to work on high-value projects.
- **Stronger endpoint security:** Automated monitoring quickly detects threats and vulnerabilities, stopping issues before they disrupt your business.
- **Faster response times:** Automated alerts and remediation speed up resolutions, minimizing downtime and workflow interruptions.
- **Fewer mistakes:** Automation reduces human error, ensuring tasks are consistently accurate and reliable.



What our customers are saying:

"I use Datto RMM every day to manage the computers in our organization. It has all the features you need, including easy application of policies, alerts and device management. Lots of ways to filter out devices, alerts, software, you name it! Once it's installed on a device, Datto filters all the hardware and software information from that device, such as serial number, computer name, ability to remote in quickly, run PowerShell commands without connecting to the laptop, browse local files and run jobs, installing software. It can read out the hardware information."



- Verified G2 Reviewer

"I've been using Datto RMM for a few years now, and it has been the most useful tool in my arsenal. The interface is beautiful and easy to navigate to get to what you need. Deploying and implementing the agent is a breeze and happens swiftly with many options. The support has been impeccable compared to other services, and I use this software every day. The benefit of Datto RMM is its ability to integrate with key systems and deploy across our domain with ease."



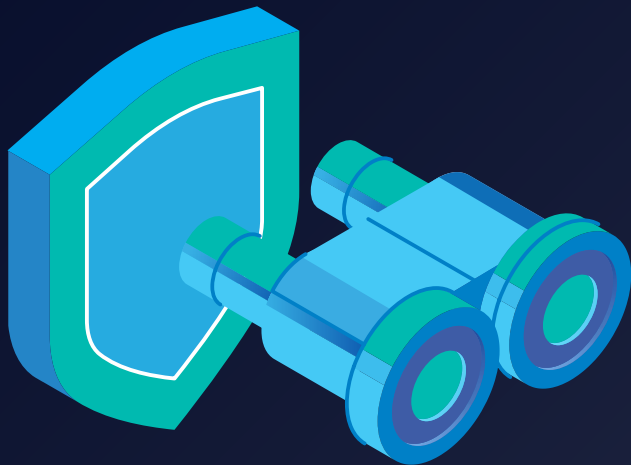
- Verified G2 Reviewer

Make endpoint monitoring less stressful with Datto RMM

Give your team full visibility, peace of mind and more time to focus on what matters.

Keeping track of multiple endpoints can quickly become an overwhelming job. Manually checking systems increases the risk of missing critical issues, and that constant pressure takes a toll on your team's focus and productivity, making each day feel longer than it needs to be.

Datto RMM helps reduce that stress by making endpoint monitoring simple and centralized. With a clear, user-friendly dashboard, your team can see what's happening across all devices – no guesswork, no scrambling, just full visibility and control.



Here's how Datto RMM streamlines your team's day:

- **Scale without stress:** Manage hundreds or thousands of endpoints from one interface, no matter how fast your business grows.
- **Clear, unified monitoring:** View all endpoints in one dashboard without jumping between tools or navigating clunky systems.
- **Integrated workflows:** Datto RMM works seamlessly with Autotask PSA, Datto BCDR and Datto Networking, automatically syncing alerts, tickets and asset data.
- **Open, flexible ecosystem:** A robust API and wide range of integrations let you easily connect Datto RMM to your existing IT tools, streamlining your operations even further.

What our customers are saying:

“Datto RMM offers an excellent balance of powerful features and ease of use. It was pretty easy to get started and up and running. As a user of other Kaseya products, such as Autotask and IT Glue, the integrations are the best that I’ve seen.”



- Verified G2 Reviewer

“Convenient, reliable and excellent for inventory tasks. The agent is really easy to deploy and lightweight but very powerful. I use it almost daily to administer a fleet of PCs remotely. It is an invaluable tool for a remote IT support person.”



- Verified G2 Reviewer

Protect every endpoint with Datto RMM

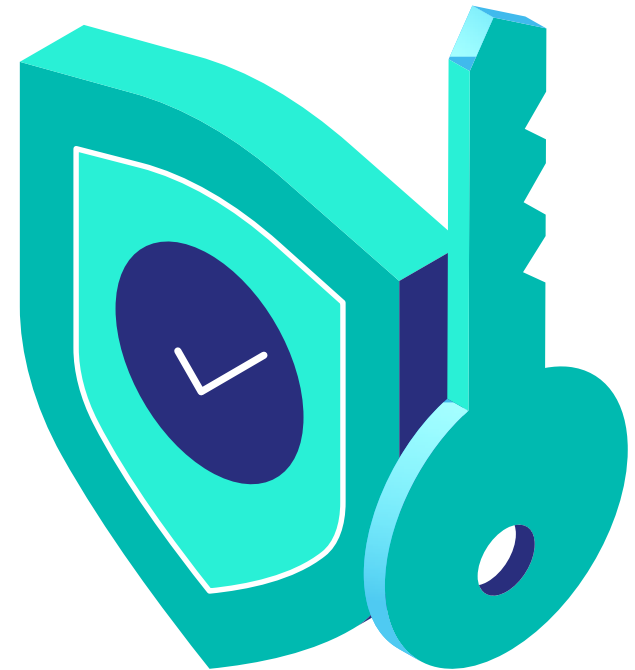
Strengthen your security and stop threats before they become problems.

Endpoints are the most common entry point for cyberattacks. Over [70% of attacks begin with a compromised device.](#) If vulnerabilities go unnoticed, your entire business could be at risk.

Datto RMM helps you stay ahead by proactively securing endpoints and reducing the manual effort required. Your team can work confidently, knowing threats are detected and handled automatically before they become serious incidents.

Here's how Datto RMM keeps your endpoints secure:

- **Automated patch management:** Quickly deploys updates and patches, closing security gaps before they can be exploited.
- **Built-in ransomware detection:** Monitors devices in real-time to catch and stop ransomware activity before it causes damage.
- **Seamless integration with Datto EDR:** Seamlessly integrates with Datto endpoint detection and response (EDR) for fast, coordinated threat detection and remediation from one dashboard.



What our customers are saying:

“Great user interface and doesn’t eat up your screen space. Users hardly notice the client is even running on their device as it leaves close to no footprints. No crashes and good security feature, in the sense that you can ensure the user’s screen is locked as soon as you disconnect, ensuring no unauthorized access to the user’s device.”



- Verified G2 Reviewer

“The best thing for me in Datto RMM is automatic patching, comprehensive system audits, browser-based remote access client and system monitoring, and easy-to-manage multiple sites.”



- Verified G2 Reviewer

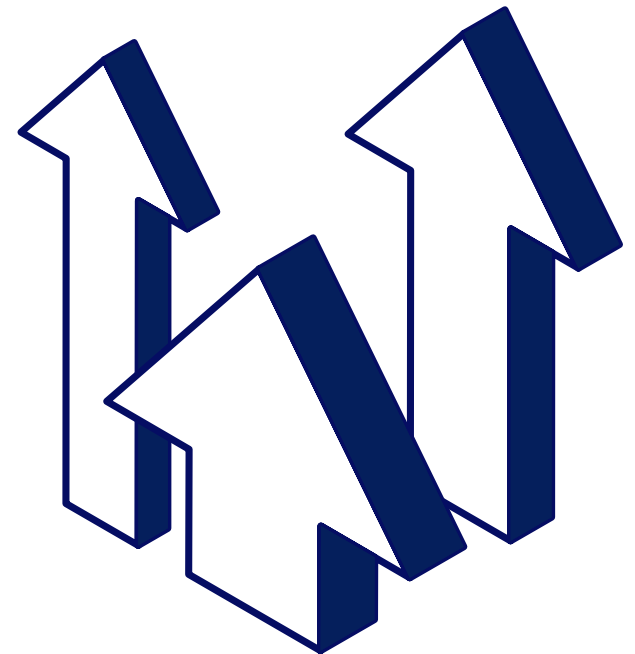
Manage Microsoft 365 and endpoints from one place

Datto RMM is the only solution that integrates endpoint and Microsoft 365 management into a single, streamlined view.

Managing Microsoft 365 separately from endpoints creates double the work, double the confusion and lowers productivity. Datto RMM brings Microsoft 365 management into the same dashboard your team already uses for endpoint monitoring, putting everything in one place so your IT team can move faster, stay organized and work with less stress.

Here's how unified Microsoft 365 management adds value to your team:

- **Single dashboard simplicity:** Manage users, licenses and security settings from the same interface you use to monitor and manage your endpoints.
- **Improved efficiency:** Save time and reduce mistakes by managing everything in one streamlined workflow.
- **Stronger security awareness:** Get a full picture of Microsoft 365 activity and respond to issues faster.



Datto RMM is the only IT tool you'll ever need

Most IT teams don't struggle because they're doing something wrong. They struggle because they're trying to do too much with tools that weren't built to work together. Before long, stress becomes the norm, and real progress feels out of reach.

Datto RMM was built not to add another tool to your stack but to replace the noise with one clear, unified platform. Endpoint management, Microsoft 365, security, automation – it's all in one place, finally working the way it should.

Take a look at what Datto RMM can do. It just might change how your team feels about Mondays.



About Datto

As a leading global provider of security and cloud-based software solutions purpose-built for managed service providers (MSPs), Datto, a Kaseya Company, believes there is no limit to what small and medium-sized businesses (SMBs) can achieve with the right technology. Datto's proven Unified Continuity, Networking, Endpoint Management and Business Management solutions drive cyber resilience, efficiency and growth for MSPs. Delivered via an integrated platform, Datto's solutions help its global ecosystem of MSP partners serve over one million businesses around the world. From proactive dynamic detection and prevention to fast, flexible recovery from cyber incidents, Datto's solutions defend against costly downtime and data loss in servers, virtual machines, cloud applications or anywhere data resides. Since its founding in 2007, Datto has won numerous awards for its product excellence, superior technical support and rapid growth, and for fostering an outstanding workplace. With headquarters in Miami, Florida, Datto has global offices in Norwalk, Connecticut as well as Australia, Canada, Denmark, Germany, the Netherlands and the United Kingdom.

datto
A Kaseya COMPANY