

# Datto RMM: The Smartest Way to Manage IT

Simplifying IT starts with choosing the right tools. That's where remote monitoring and management (RMM) or unified endpoint management (UEM) comes in. However, not all RMM solutions deliver the same results, and that's what makes Datto RMM different.

Think about the hours you could save by automating routine tasks and the confidence that comes with knowing that your systems are secure and your team has everything they need to work efficiently. With Datto RMM, you can turn that possibility into reality. Unlike other platforms that feel clunky or overly complex, Datto RMM is designed for ease of use and maximum impact.

It's your key to delivering value and driving success.

## Key metrics at a glance



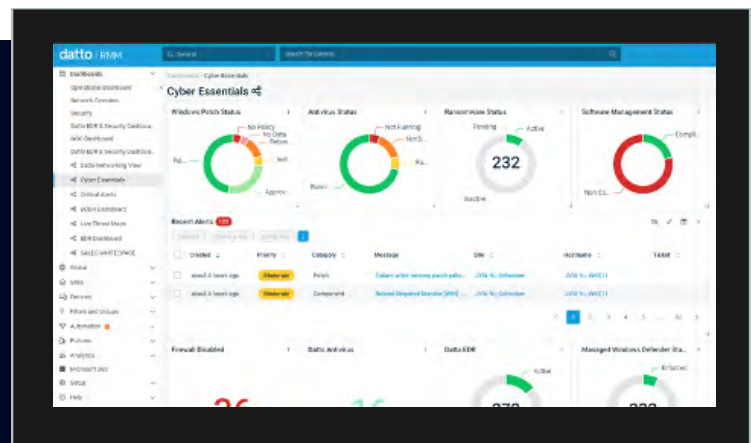
Established in 2007, Datto RMM brings over 15 years of expertise to IT management.



Offers 250+ integrations to streamline and enhance your workflows.



Trusted by hundreds of thousands of IT professionals across the globe.



## 5 reasons Datto RMM works for IT professionals

Whether you're juggling multiple endpoints, battling constant updates or looking to improve efficiency, here's why everyone trusts Datto RMM to get the job done:

### 1 Saves time

No one wants to spend hours on repetitive tasks, especially with all the other pending priorities IT professionals have in their day-to-day. Datto RMM streamlines workflows letting you automate routine jobs so you can focus on the big picture.

### 2 Unified endpoint AND user management

Datto RMM is the only RMM to offer a native and unified Microsoft 365 management module to empower you to manage every endpoint AND to onboard, offboard and quarantine users from a single pane of glass. Reset passwords instantly, see all your M365 tenants and manage user configurations to improve efficiency, service delivery and security with ease.

### 3 Built for security

Security is a top priority for almost all organizations, and with Datto RMM, you'll deliver. With advanced features like automated patch management, proactive threat detection and comprehensive endpoint monitoring, Datto RMM safeguards your IT environment while minimizing vulnerabilities and downtime.

### 4 Automated patch management

Keeping devices up to date is essential but tedious. Datto RMM makes it effortless by automating patch management, ensuring every endpoint stays secure with minimal effort. It also sports a massive catalog of 300+ patchable third-party applications and risk-based patching to ensure every vulnerability is patched quickly and easily.

### 5 Extensive integrations

Your tools should work together seamlessly. Datto RMM integrates with leading ticketing or PSA tools, networking solutions and IT documentation platforms, creating a unified system that streamlines workflows. With custom scripts, policies and webhooks, you can automate operations and boost your team's productivity to new levels.

## What users are saying about Datto RMM

Trusted by IT teams and MSPs worldwide, Datto RMM simplifies IT management. Here's what real users have to say:



*"Datto RMM is easy to set up, easy to learn and easy to work with. Our team of engineers and my less technical colleagues were able to get around with minimum learning time."*

– Verified G2 Reviewer

*"The top RMM product on the market for MSPs to add value for their clients."*

– Verified G2 Reviewer

## Simplify IT With Datto RMM

Choosing the right tools can make all the difference, and Datto RMM proves it by helping you work smarter, not harder. With powerful automation and smart integrations, it removes the busywork and lets your team stay ahead.

**WORK SMARTER  
WITH DATTO RMM**



#### Corporate Headquarters

Kaseya Miami  
701 Brickell Avenue  
Suite 400  
Miami, FL 33131  
partners@datto.com  
[www.datto.com](http://www.datto.com)

#### Global Offices

USA: 888.294.6312  
Canada: 877.811.0577  
EMEA: +44 (0) 118 402 9606  
Australia: +61 (02) 9696 8190  
Singapore: +65-31586291

Copyright © 2025 Datto, Inc.  
All rights reserved.  
Effective November 2025.

All information is accurate to the best of Datto's knowledge at the time prepared. Datto reserves the right to correct errors/discrepancies.